

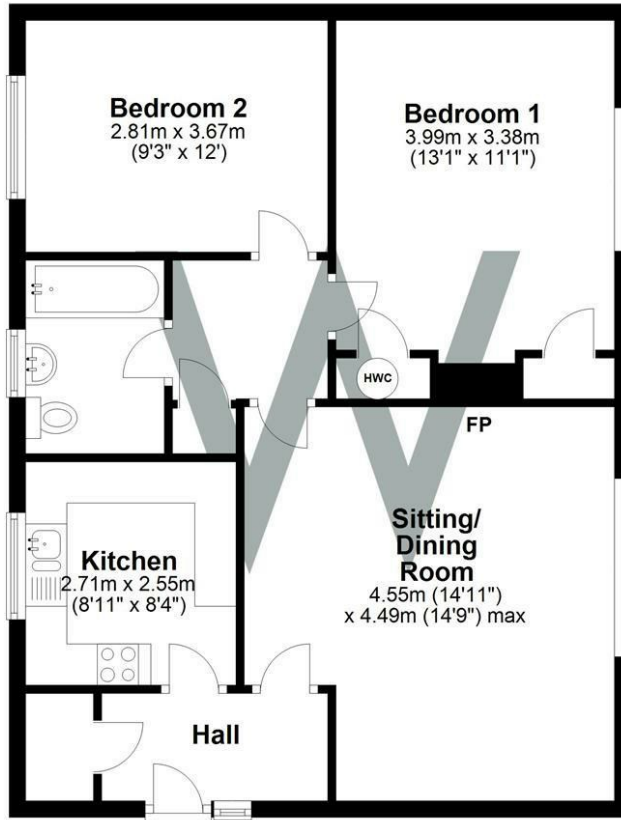


18 The Brambles London Road, Salisbury, SP1 3EY

An exceptionally spacious top floor flat offered in good order throughout ** TWO BEDROOMS ** ELECTRIC HEATING ** LOCKABLE SHED ** NO ONWARD CHAIN **

£139,950

Second Floor
 Approx. 67.7 sq. metres (728.4 sq. feet)



Total area: approx. 67.7 sq. metres (728.4 sq. feet)

WHITES

Castle Chambers, 47 Castle Street, Salisbury,
 Wiltshire, SP1 3SP
 Tel: 01722 336422/Option 2
 www.hwwhite.co.uk
 email: lettings-management@hwwhites.co.uk

Energy Efficiency Rating		Current	Potential
Very energy efficient - lower running costs			
(92 plus) A			
(81-91) B			
(69-80) C			
(55-68) D			
(39-54) E			
(21-38) F			
(1-20) G			
Not energy efficient - higher running costs			
England & Wales		61	75
	EU Directive 2002/91/EC		

Environmental Impact (CO ₂) Rating		Current	Potential
Very environmentally friendly - lower CO ₂ emissions			
(92 plus) A			
(81-91) B			
(69-80) C			
(55-68) D			
(39-54) E			
(21-38) F			
(1-20) G			
Not environmentally friendly - higher CO ₂ emissions			
England & Wales			
	EU Directive 2002/91/EC		